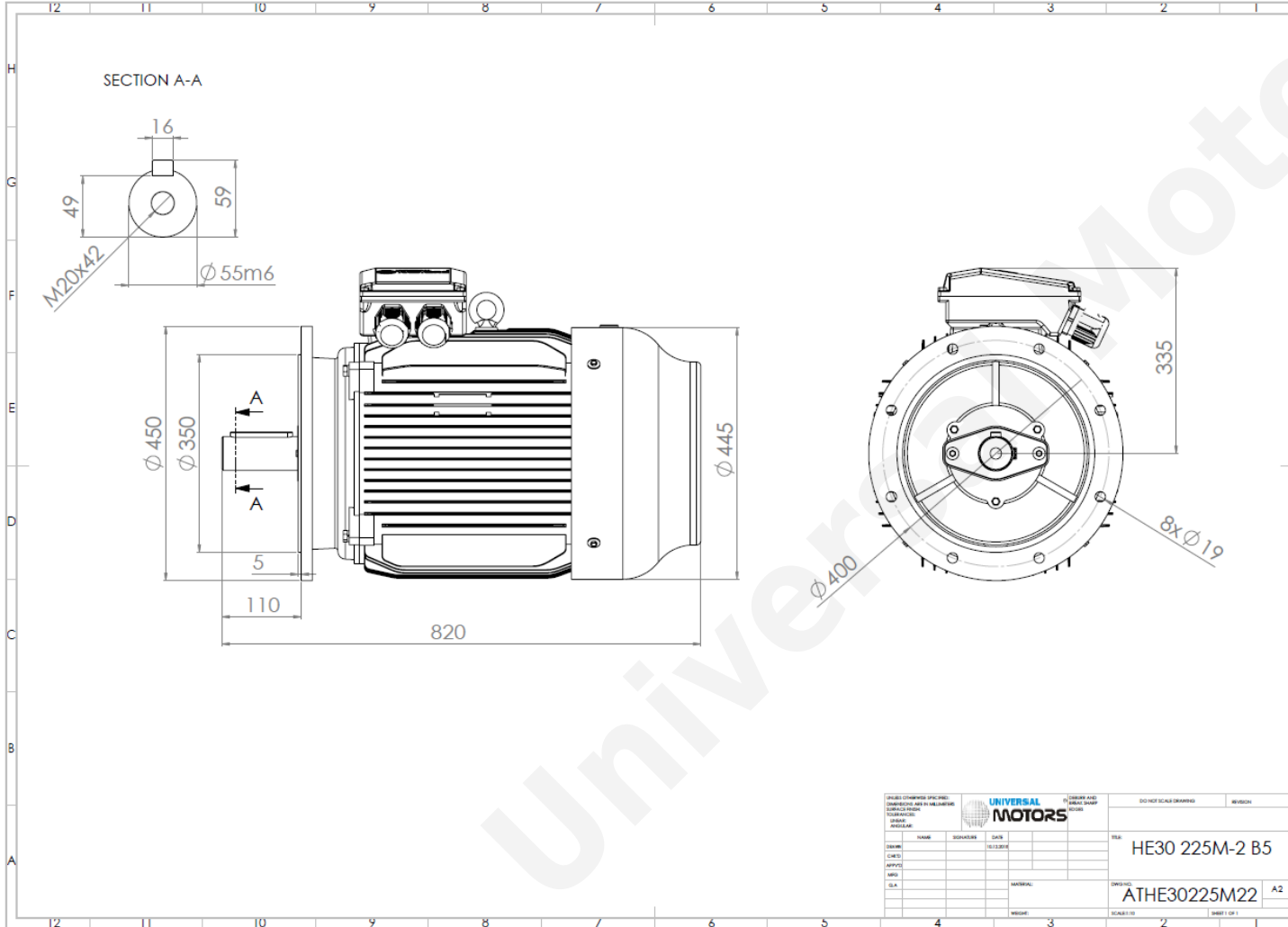




TECHNICAL DATA

Three Phase Electric Motors - Cast Iron Frame
 HE30 225 M-2 IE2
 45 kW / 60 Cv
 2960 RPM



Motor type:	HE30 225 M-2 IE2
Output:	45 kW / 60 Cv
Speed (min ⁻¹):	2960 RPM
Frequency:	50 Hz
Voltage:	400 V
Current:	78.6 A
Power factor (Cos Ø):	0.89
Poles:	2
Insulation class:	F
Temperature rise Class:	B
Efficiency 50%:	92.6 %
Efficiency 75%:	93.3 %
Efficiency 100%:	92.9 %
Torque:	145 N.m
Tstarting/Tnominal:	2.2
Istarting/Inominal:	7.6
Tmaximum/Tnominal:	2.3
Noise:	75 Db(A)
Weight:	312 Kg
Bearing DE:	6313 C3
Bearing NDE:	6313 C3

UNIVERSAL MOTORS		DO NOT SCALE DRAWING		REVISION
DESIGNER	DATE	SCALE	DRAWING NO.	
CHECKED	DATE	SCALE	DRAWING NO.	
APPROVED	DATE	SCALE	DRAWING NO.	
DATE	DATE	SCALE	DRAWING NO.	
MATERIAL		SCALE		SHEET 1 OF 1
MATERIAL		SCALE		SHEET 1 OF 1

Regime - S1

Altitude - 1000m

Environment Temperature - 40°C

CONTACTS:

UNIVERSAL MOTORS Tel: +351 252 299 080
 Rua de São Brás,745 Fax: +351 252 299 089
 4480-782 VILA DO CONDE Mail: geral@universalmotors.pt

* References applied only in the UK